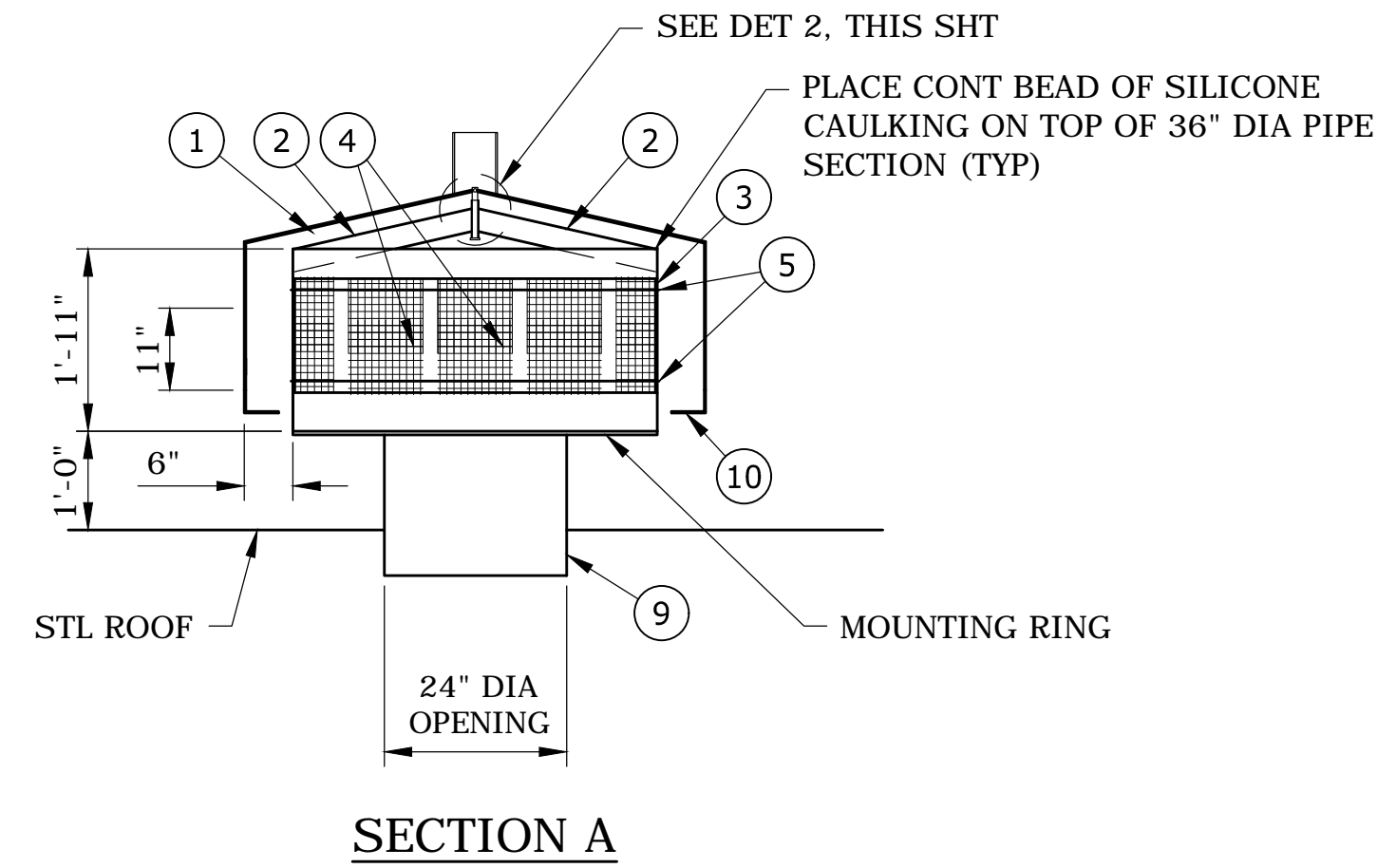
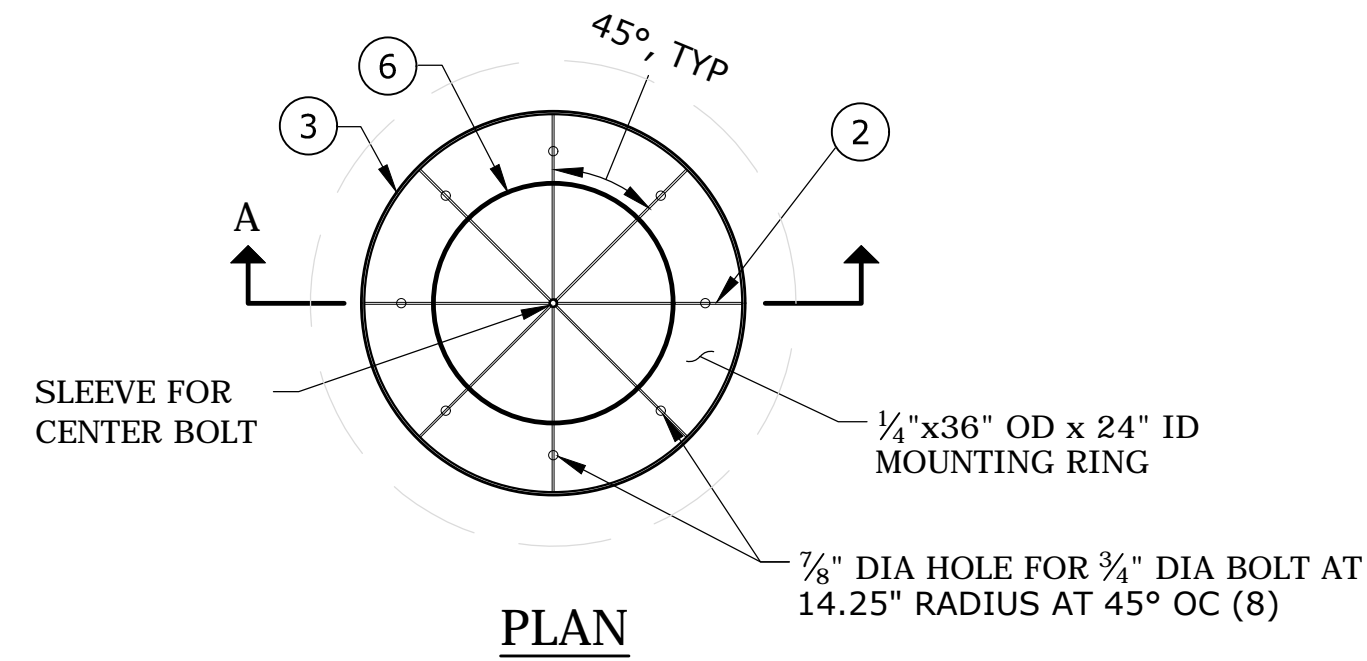


C:\PDX_Projects\16\1846 - Lewis County Vader Enchanted\CAD\Sheets\16-1846-WA-MECH.dwg M-3 4/16/2018 10:57 AM KYLE THOMPSON 21.0s (LMS Tech)

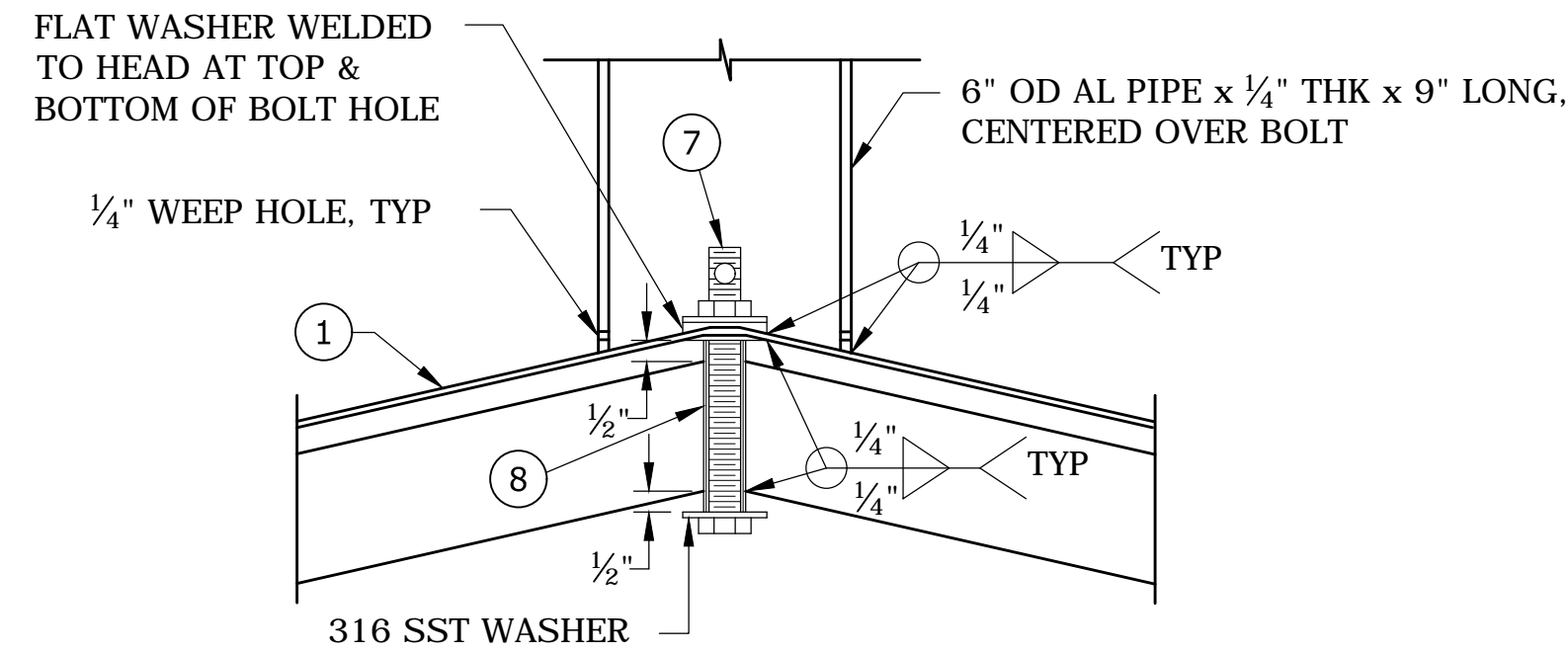


NOTE: SEE DETAIL 3, THIS SHEET FOR OPENING DIMENSIONS.

△ ROOF VENT DETAIL 1
SCALE: NTS

ROOF VENT PARTS LIST:

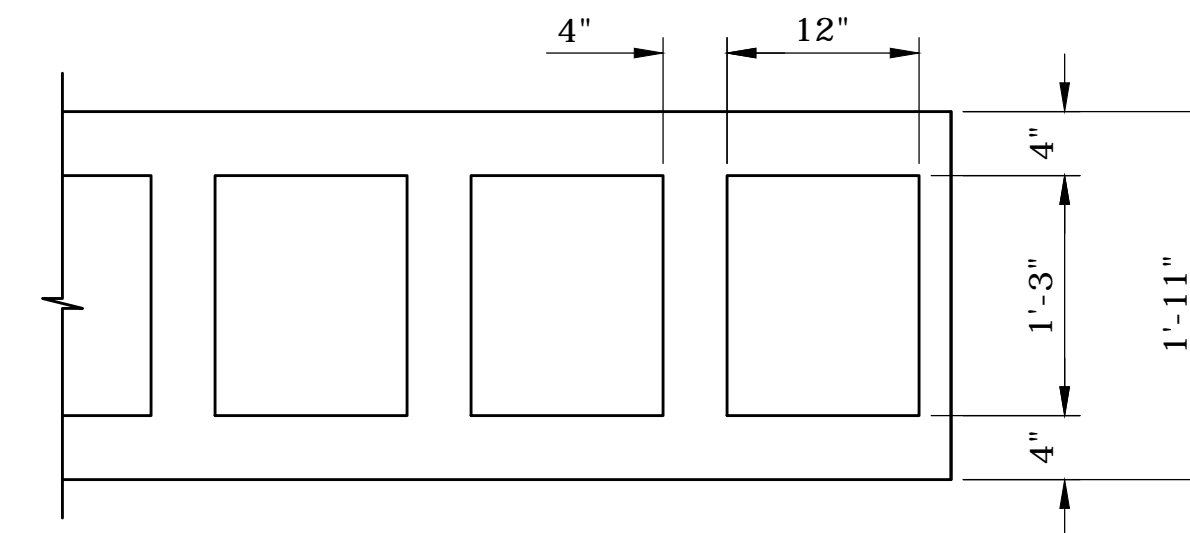
- ① 48" DIA x 3/16" AL HEAD W/ 11" SKIRT
- ② 2"x1/4" STIFFENER STRIPS (8 TOTAL)
- ③ 1'-11" LONG x 1/4" WALL x 36" DIA OD PIPE W/ OPENINGS PER DET 3, THIS SHT
- ④ 6'-6" LONG x 16" SST 316 MESH WIRE CLOTH, 24 MESH
- ⑤ SST 316 0.025" x 1/2" PERF BAND W/ SST 316 AERO SEAL "BREEZE" GRIPPING STRAP & ADJ WORM DRIVE CLAMP (2 TOTAL), INSTALL CLAMPING RINGS AFTER SCREEN IS IN PLACE
- ⑥ 24" DIA x 3/16" WALL x APPROX 14" LONG PIPE
- ⑦ 3/4" DIA x 7" LONG SST 316 BOLT W/ NUT & WASHERS THROUGH VENT HEAD, PROVIDE HOLE FOR PADLOCK, ADHERE BOLT TO SLV W/ EPOXY
- ⑧ 3/4" DIA SCHED 40 PIPE
- ⑨ VENT RING, SEE DET A, SHT S-4
- ⑩ AL EXPANDED METAL SCREEN W/ BANDED EDGES & WELDED TO VENT HOOD



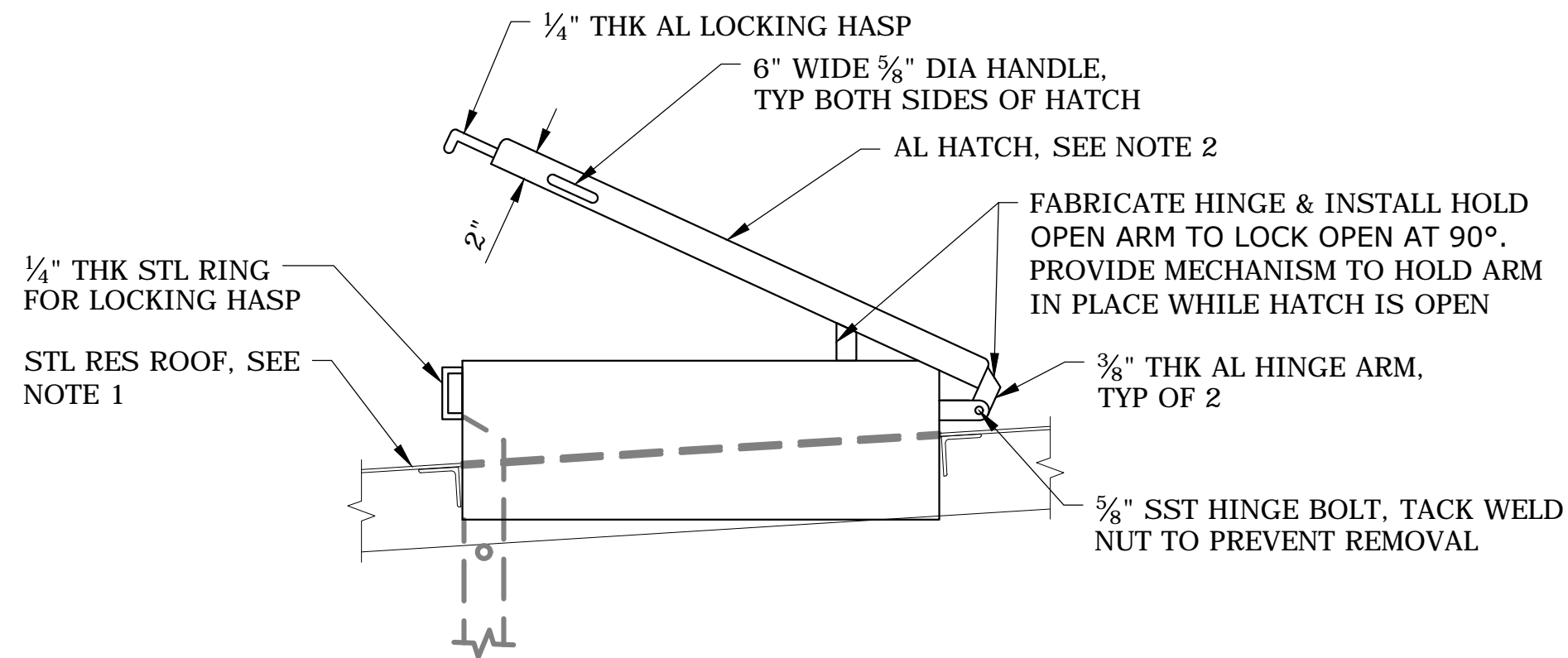
ROOF VENT - BOLT AT TOP DETAIL 2
SCALE: NTS

NOTES:

- 1. ALL VENT MATERIAL UNLESS OTHERWISE NOTED, TO BE STAINLESS STEEL OR CARBON STEEL.
- 2. FINAL DESIGN TO BE PROVIDED BY TANK MANUFACTURER.
- 3. PROVIDE GASKETS AGAINST ALL STAINLESS STEEL SURFACES AND INSULATED WASHER AND SLEEVES ON BOLTS.



ROOF VENT OPENINGS DETAIL FOR 36\"/>

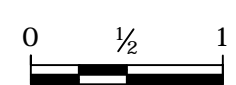


△ ACCESS HATCH 4
SCALE: NTS

ACCESS HATCH NOTES:

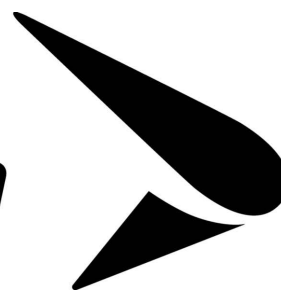
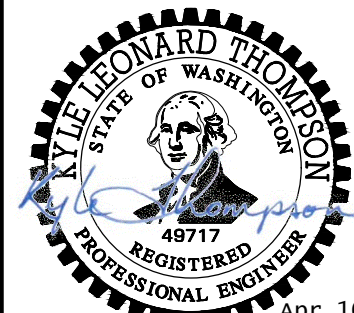
- 1. REFER TO STRUCTURAL DRAWINGS FOR ACCESS HATCH PENETRATION AND OPENING DETAILS.
- 2. INSTALL RUBBER GASKET ON UNDERSIDE OF HATCH LID TO ISOLATE DISSIMILAR METALS.
- 3. CONTRACTOR SHALL SUBMIT SHOP DRAWINGS OF ACCESS HATCH FABRICATION FOR APPROVAL. SEE SPECIFICATIONS.
- 4. PAINT HATCH TO MATCH TANK.

NOTICE



IF THIS BAR DOES NOT MEASURE 1" THEN DRAWING IS NOT TO SCALE

KLT
DESIGNED
CAD
DRAWN
MLH
CHECKED



VADER-ENCHANTED VALLEY RESERVOIR

RESERVOIR APPURTENANCES - 3

SHEET

M-3

30 of 35

NO.	DATE	BY	REVISION
△	04/16/18	KLT	ACCESS HATCH DETAIL; REVISE NOTE