

SECTION 009113.10 - ADDENDUM NO. 1

1.1 PROJECT INFORMATION

- A. Project Name: Lewis County Fire Protection District No. 1 - Emergency Services Facility.
- B. Owner: Lewis County Fire Protection District No. 1.
 - 1. Owner's Representative: Brad Flexhaug, Fire Chief; Lewis County Fire Protection District No. 1; PO Box 100; Onalaska, WA 98570; (360) 520-3820; chieflcf1@gmail.com.
- C. Architect: Neil A Meyer, RA, AIA; meyArchitecture; (360) 701-4706; meyArchitecture@comcast.net.
- D. Architect Project Number: 17015.00.
- E. Date of Addendum: September 10, 2019.

1.2 NOTICE TO BIDDERS

- A. This Addendum is issued to all registered plan holders pursuant to the. This Addendum serves to clarify, revise, and supersede information in the Project Manual, Drawings, and previously issued Addenda. Portions of the Addendum affecting the Contract Documents will be incorporated into the Contract by enumeration of the Addendum in the Owner/Contractor Agreement.
- B. The Bidder shall acknowledge receipt of this Addendum in the appropriate space on the Bid Form.
- C. The date for receipt of bids is unchanged by this Addendum, at same time and location.

1.3 ATTACHMENTS

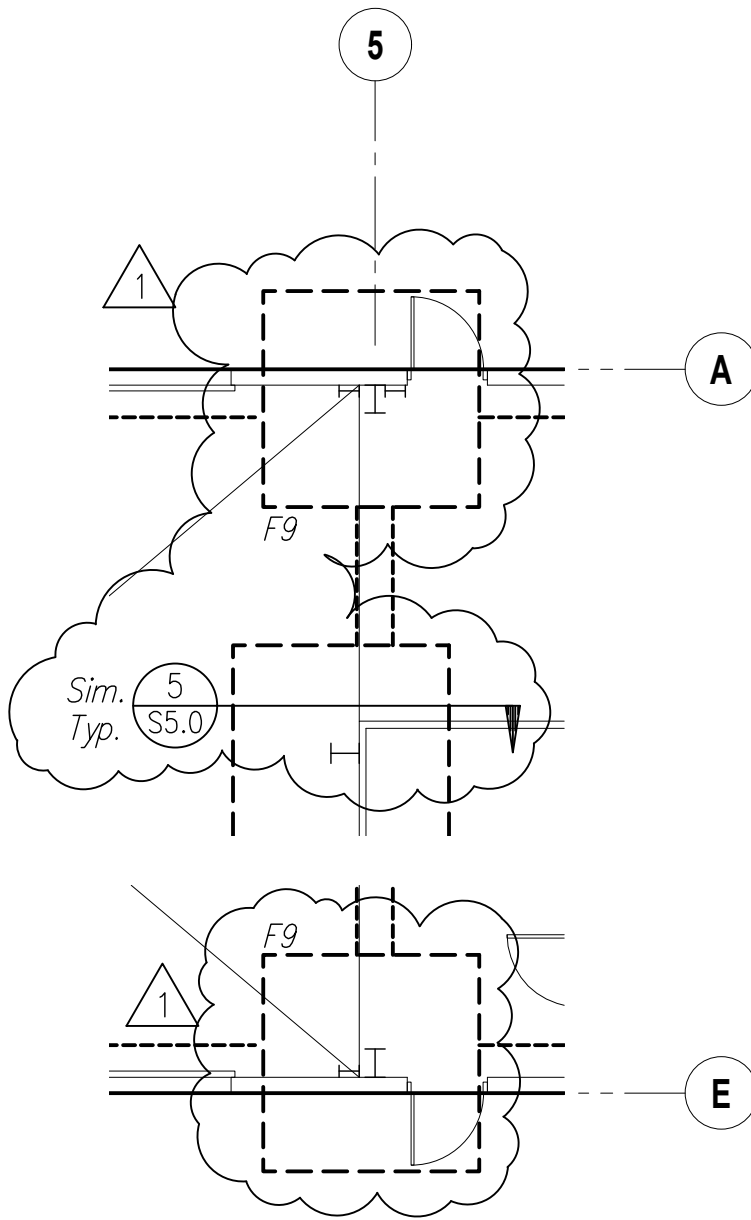
- A. This Addendum includes the attached Addendum Drawings:
 - 1. Structural Addendum Drawing SSK-1, revising Sheet S2.1 - Foundation & Loft Framing Plan.
 - a. Drawing Foundation Plan - Base Bid: Revised footing sizes at Grids 5-A and 5-E from an F79 to an F9 footing. Corrected detail callout near Grid 5-B to reference Detail 5/S5.0.
 - 2. Structural Addendum Drawing SSK-2, revising Sheet S2.1 - Foundation & Loft Framing Plan.
 - a. Drawing Foundation Plan - Base Bid: Added note pertaining to conduit penetrations through footings.
 - 3. Structural Addendum Drawing SSK-3, revising Sheet S5.0 - Structural Details.
 - a. Drawing 2/S5.0 - Detail: Concrete Edge w/ CMU Wall: Revised wind and seismic loading from veneer into PEMB structure.
 - 4. Structural Addendum Drawing SSK-4, revising Sheet S5.0 - Structural Details.
 - a. Drawing 5/S5.0 - Detail: Column Footing: Clarifications for several callouts.
 - 5. Structural Addendum Drawing SSK-5, revising Sheet S5.1 - Structural Details.
 - a. Drawing B/S5.1 - Detail: Column to Beam Connection: Revised purlin clip dimension, and clarification on beam callout.
 - 6. Electrical Addendum Drawing ESK-2.2, revising Sheet E2.2 - Power Floor Plan.
 - a. Drawing 2 - Power Floor Plan - Alternate Bid: Provide electrical connections for Fire Smoke Dampers.

7. Fire Protection Addendum Drawing FASK-2.1, revising Sheet FA2.1 - Fire Alarm Floor Plan.
 - a. Drawing 2 - Fire Alarm Floor Plan - Alternate Bid: Add (5) Combination Fire Alarm Fire/Smoke Dampers. Connect dampers to fire alarm system.
- 1.4 REVISIONS TO DIVISION 00 PROCUREMENT REQUIREMENTS AND CONTRACTING REQUIREMENTS
- A. Document 001116 - Invitation to Bid, (not reissued).
 1. Paragraph 1.1.E: Change third sentence to read, "The alternate bid will include the tenant improvements of the administration operations along with adding additional gravel parking and converting a standard parking stall into an additional accessible parking stall."
- 1.5 REVISIONS TO DIVISION 01 GENERAL REQUIREMENTS
- A. Specification Section 011000 - Summary, (not reissued).
 1. Paragraph 1.3.A.1: Change third sentence to read, "The alternate bid will include the tenant improvements of the administration operations along with adding additional gravel parking and converting a standard parking stall into an additional accessible parking stall."
- 1.6 REVISIONS TO DIVISIONS 02 - 49 SPECIFICATION SECTIONS
- A. Specification Section 092900 - Gypsum Board, (not reissued).
 1. Paragraph 2.2.A.1: Add manufacturer to read, "f. Continental Building Products."
- 1.7 REVISIONS TO DRAWING SHEETS
- A. Sheet TITLE - Title (not reissued).
 1. Drawing A - Code Plan: Change south exit occupant load to read, "EXIT - 34 OCC."
 2. Legend:
 - a. Change Business to read, "1347 SF / 100SF/OCC = 13 OCC."
 - b. Change Total Occupants to read, "83 OCC."
 3. Code Analysis:
 - a. Change OCC LOAD to read, "83 (SEE CODE PLAN)."
 - b. Plumbing Calculations:
 - 1) Change Building Total to read, "83 OCC (SEE CODE PLAN)."
 - 2) Change B Occupancy to read, "13 OCC / 2 SEXES = 7 OCC/SEX."
 - B. Sheet C3.1 - Horizontal Control Plan (not reissued).
 1. Horizontal Control Notes: Change Note 10 to read, "Alternate Bid Item #1. Future ADA parking stall to support gravel parking."
 - C. Sheet A2.1 - Floor Plans (not reissued).
 1. Drawing B - Base Bid Plan: Move west wall of 114 - Electrical 12-inches west and change dimension string to read, "6'-8 1/2" "
 - D. Sheet M0.2 – Schedules (not reissued).
 1. Fan Schedule: Add Fan to read, "EF-3, Work Room 105, Greenheck SQ-100-VG, in-line, 1200 cfm, 0.375" ESP, 1/4 HP, 120/1, ECM motor, backdraft damper, 47 pounds."

2. Plumbing Fixture Schedule:
 - a. ID TD-1:
 - 1) Description: Change to read, "HDPE modular channels with 4" throat, Zurn Z886-HDG-RFGC, including galvanized steel frames and reinforced slotted galvanized steel grate, class-C rated."
 - 2) Comments: Add note to read, "4."
 - b. Notes: Add note to read, "4. Approved Alternate - Hubbell Polycast, Series 600 Polyester, DG0640R Class C slotted galvanized grates, DA0620A Polygard galvanized frames."
 3. Water Heater Schedule:
 - a. Add note to read, "3. Provide condensate drain neutralizing kit."
 - b. Add note to read, "4. Provide concentric vent kit."
- E. Sheet E0.1 - Electrical Legend (not reissued).
1. General Notes (Apply to all Sheets): Add note to read, "21. Contractor to refer to the Architectural drawings for 2-hour fire walls and provide fire-rated penetrations through them to meet code. Provide all fire-rated caulking around the penetrations to seal them."
- F. Sheet E1.1- Electrical Site Plan (not reissued).
1. Construction Notes:
 - a. Change Note 6 to read, "Provide 4" C.O. (Schedule 80) for Power Co. to power pole. Provide boring under the road."
 - b. Change Note 7 to read, "Provide 4" C.O. (Schedule 80) to telephone pedestal from telephone terminal board in electrical room 114. Provide boring under road."
 - c. Add note to read, "8 - Transformer Vault furnished by PUD. E.C. to install vault and dig trenches, backfill and compact to accommodate PUD installation of power to the facility."
- G. Sheet E6.0 - One Line Diagram (not reissued).
1. Panel Schedule A2:
 - a. Circuit A23 - Drinking Fountain: Add note, "Provide GFCI circuit breaker."
 - b. Circuits 57 and 59 - Space: Change to read, "Fire Alarm Smoke Dampers," and provide (2) 20A/1P circuit breakers.

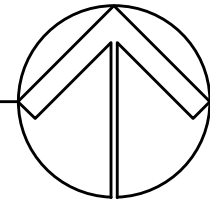
END OF DOCUMENT 009113.10

Plotted: Sep 09, 2019 - 13:25 erikm P:\19Files\A19136.00 MeyArchitecture - Onalaska Fire Stn\Drawings\A19136.00 Onalaska Fire.dwg Layout Name: ADD1_S2.1 FOUNDATION GRID 5



FOUNDATION PLAN - BASE BID

Scale: 1/8" = 1'-0"

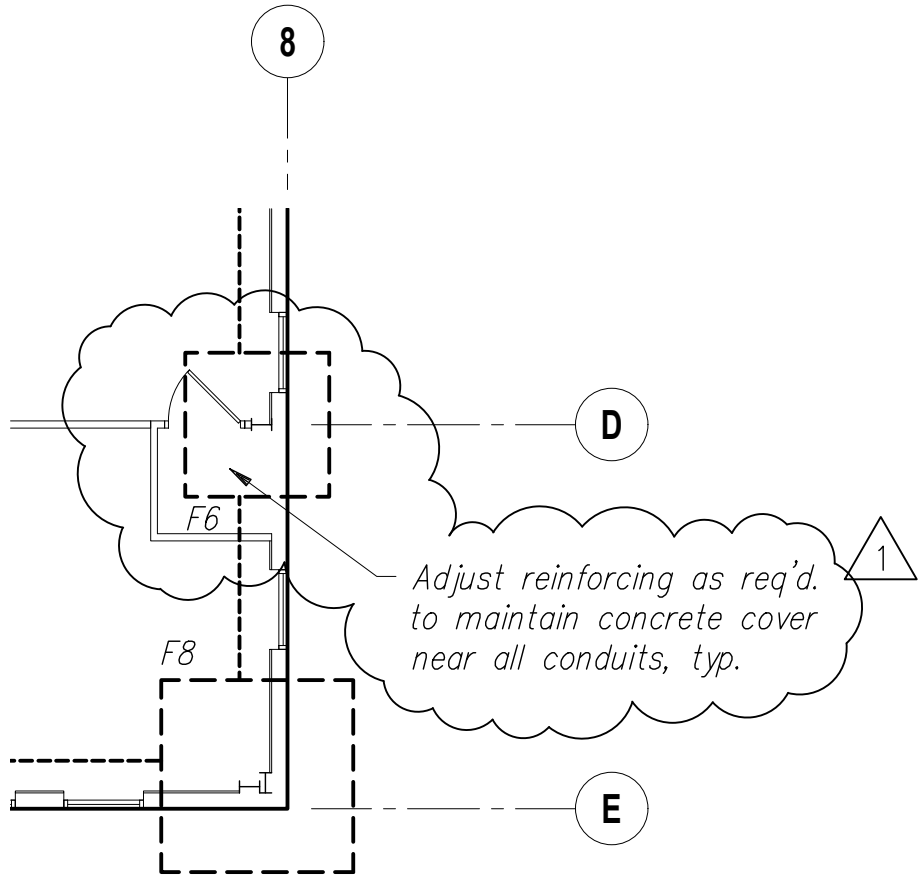


Rev.	Date	By	Description
1	09.10.19	ECM	Revised footing size and callout bubble

LCFP DISTRICT NO. 1: Emergency Services Facility

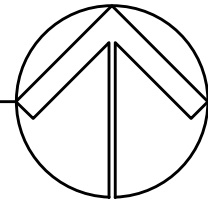
MEY ARCHITECTURE 2626 Country Club Road NW Olympia, WA 98502 Phone 360.701.4706 Email meyArchitecture@comcast.net	SARGENT SARGENT ENGINEERS, INC. 320 Ronlee Lane NW • Olympia, WA 98502 Tel. 360 867-9284 • Fax 360 867-9318	Designer: ECM	Ref. No. 17015.00
		Checker: CAM	SEI No. A19136.00
		Drafter: ECM	SSK1
		Issue Date: 09.03.2019	

Plotted: Sep 09, 2019 - 13:25 erikm P:\19Files\A19136.00 MeyArchitecture - Onalaska Fire Stn\Drawings\A19136.00 Onalaska Fire.dwg Layout Name: ADD1_S2.1 FOUNDATION GRID 8



FOUNDATION PLAN - BASE BID

Scale: 1/8" = 1'-0"

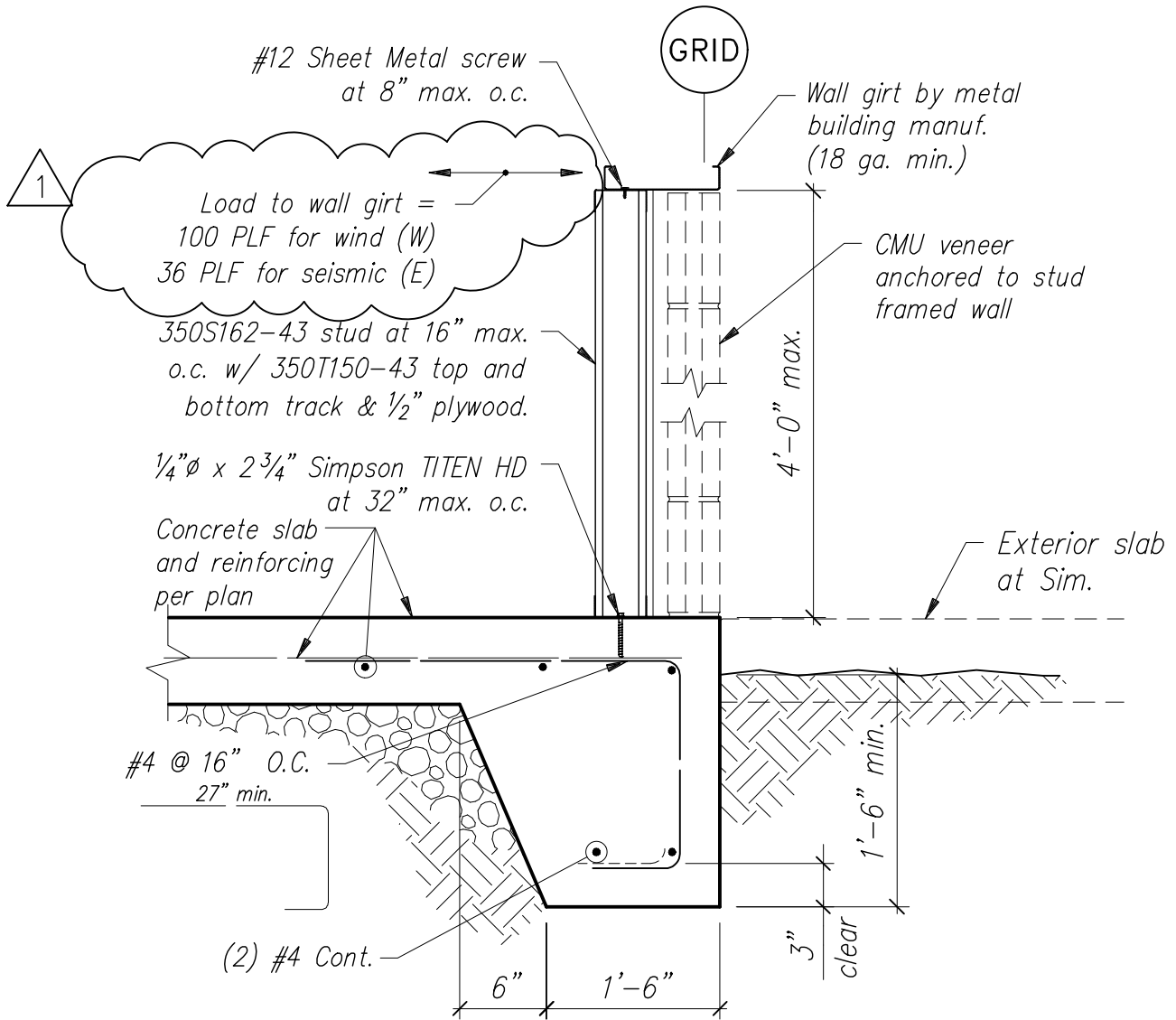


Rev.	Date	By	Description
1	09.10.19	ECM	Added conduit clearance note.

LCFP DISTRICT NO. 1: Emergency Services Facility

MEY ARCHITECTURE 2626 Country Club Road NW Olympia, WA 98502 Phone 360.701.4706 Email meyArchitecture@comcast.net	SARGENT SARGENT ENGINEERS, INC. 320 Ronlee Lane NW • Olympia, WA 98502 Tel. 360 867-9284 • Fax 360 867-9318	Designer: ECM	Ref. No. 17015.00
		Checker: CAM	SEI No. A19136.00
		Drafter: ECM	SSK2
		Issue Date: 09.03.2019	

Plotted: Sep 09, 2019 - 13:26 erikm P:\19Files\A19136.00 MeyArchitecture - Onalaska Fire Stn\Drawings\A19136.00 Onalaska Fire.dwg Layout Name: ADD1_S5.0 Detail 2



DETAIL: CONCRETE EDGE W/ CMU WALL

2
S5.0

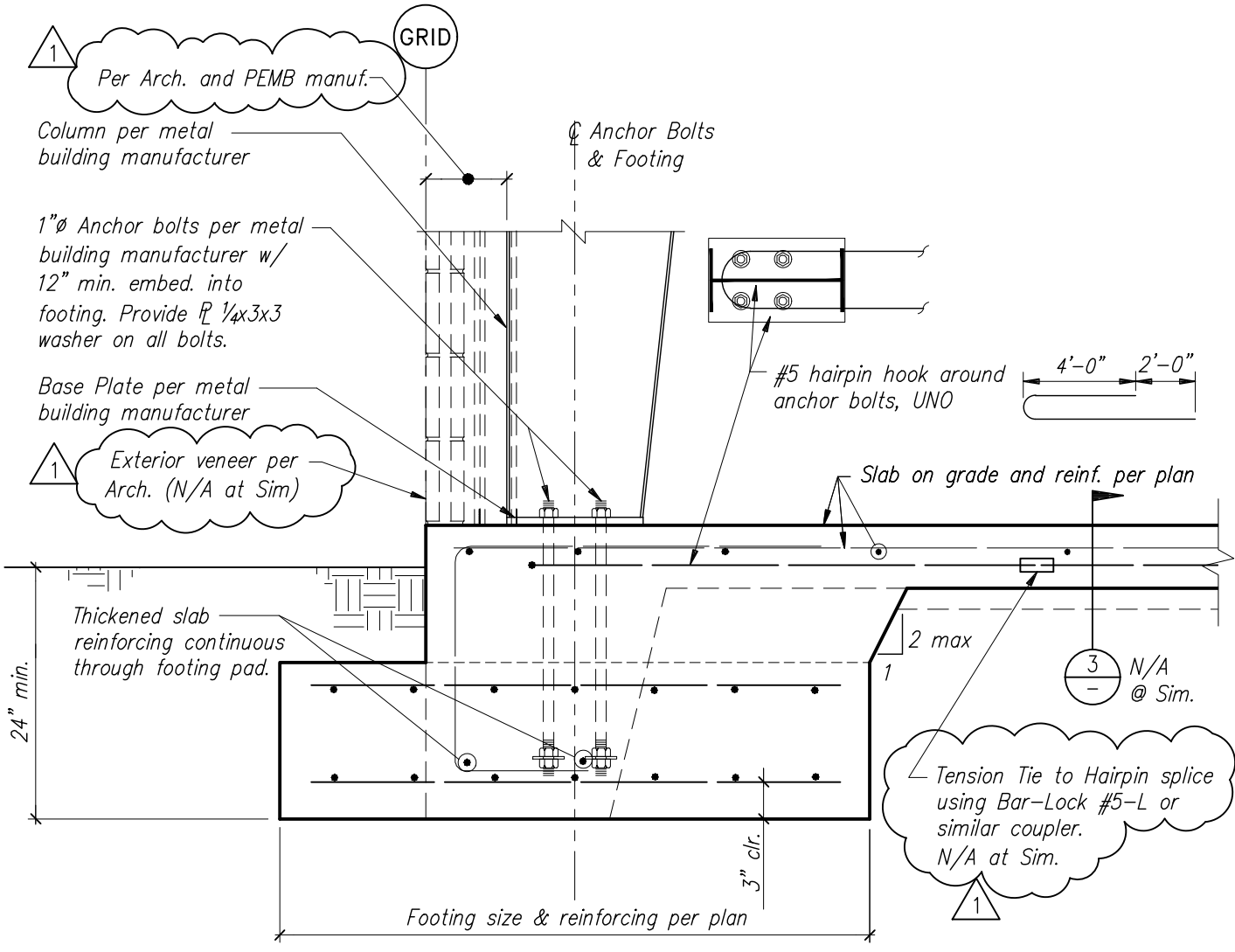


Rev.	Date	By	Description
1	09.10.19	ECM	Revised veneer loading to PEMB structure.

LCFP DISTRICT NO. 1: Emergency Services Facility

<p>MEY ARCHITECTURE 2626 Country Club Road NW Olympia, WA 98502 Phone 360.701.4706 Email meyArchitecture@comcast.net</p>	<p>SARGENT SARGENT ENGINEERS, INC. 320 Ronlee Lane NW • Olympia, WA 98502 Tel. 360 867-9284 • Fax 360 867-9318</p>	Designer: ECM	Ref. No. 17015.00
		Checker: CAM	SEI No. A19136.00
		Drafter: ECM	SSK3
		Issue Date: 09.03.2019	

Plotted: Sep 09, 2019 - 13:26 erikm P:\19Files\A19136.00 MeyArchitecture - Onalaska Fire Stn\Drawings\A19136.00 Onalaska Fire.dwg Layout Name: ADD1_S5.0 Detail 5



DETAIL: COLUMN FOOTING

5
S5.0

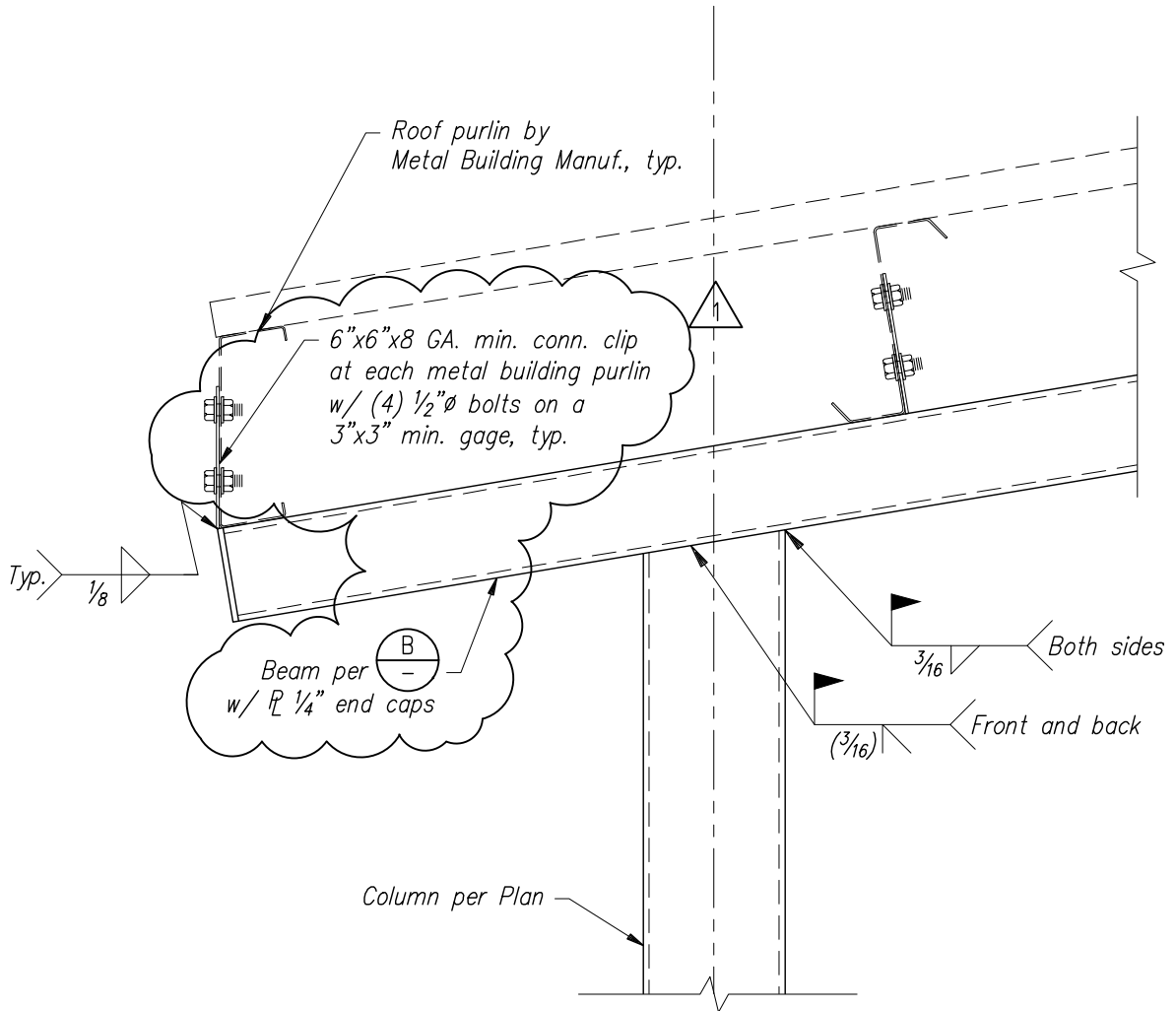


Rev.	Date	By	Description
1	09.10.19	ECM	Revised callout notes for clarity.

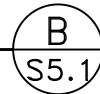
LCFP DISTRICT NO. 1: Emergency Services Facility

MEY ARCHITECTURE 2626 Country Club Road NW Olympia, WA 98502 Phone 360.701.4706 Email meyArchitecture@comcast.net	SARGENT SARGENT ENGINEERS, INC. 320 Ronlee Lane NW • Olympia, WA 98502 Tel. 360 867-9284 • Fax 360 867-9318	Designer: ECM	Ref. No. 17015.00
		Checker: CAM	SEI No. A19136.00
		Drafter: ECM	SSK4
		Issue Date: 09.03.2019	

Plotted: Sep 09, 2019 - 13:26 erikm P:\19Files\A19136.00 MeyArchitecture - Onalaska Fire Stn\Drawings\A19136.00 Onalaska Fire.dwg Layout Name: ADD1_S5.1 Detail B



DETAIL: COLUMN TO BEAM CONNECTION



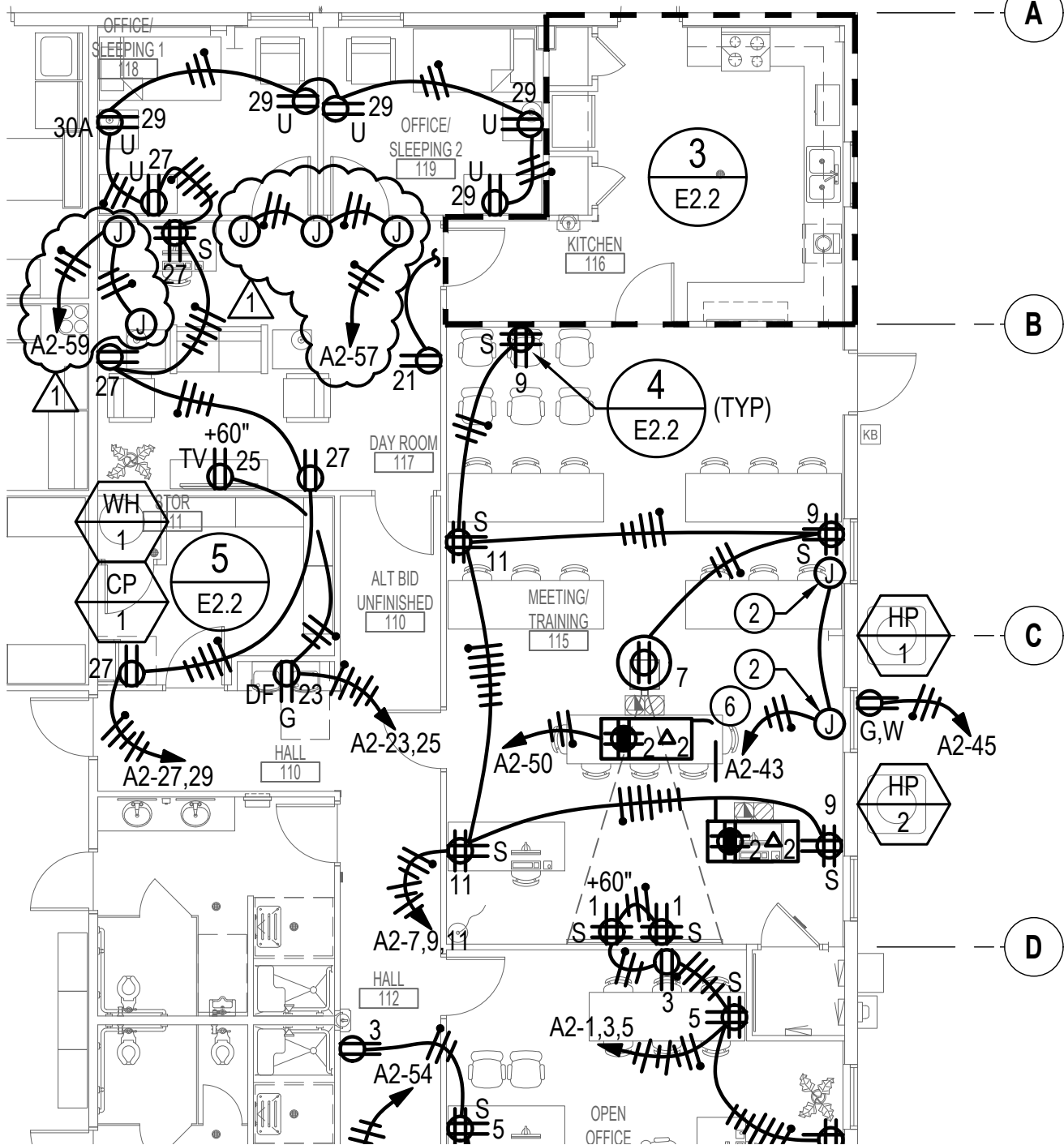
Rev.	Date	By	Description
1	09.10.19	ECM	Revised purlin clip dimensions and beam callout

LCFP DISTRICT NO. 1: Emergency Services Facility

MEY ARCHITECTURE 2626 Country Club Road NW Olympia, WA 98502 Phone 360.701.4706 Email meyArchitecture@comcast.net	SARGENT SARGENT ENGINEERS, INC. 320 Ronlee Lane NW • Olympia, WA 98502 Tel. 360 867-9284 • Fax 360 867-9318	Designer: ECM	Ref. No. 17015.00
		Checker: CAM	SEI No. A19136.00
		Drafter: ECM	SSK5
		Issue Date: 09.03.2019	

10

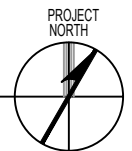
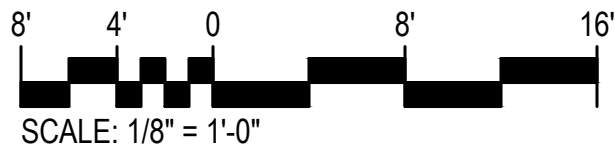
PROVIDE ELECTRICAL CONNECTION TO FIRE SMOKE DAMPER DAMPERS. SEE MECHANICAL DRAWINGS FOR EXACT LOCATION.



2

POWER FLOOR PLAN - ALTERNATE BID

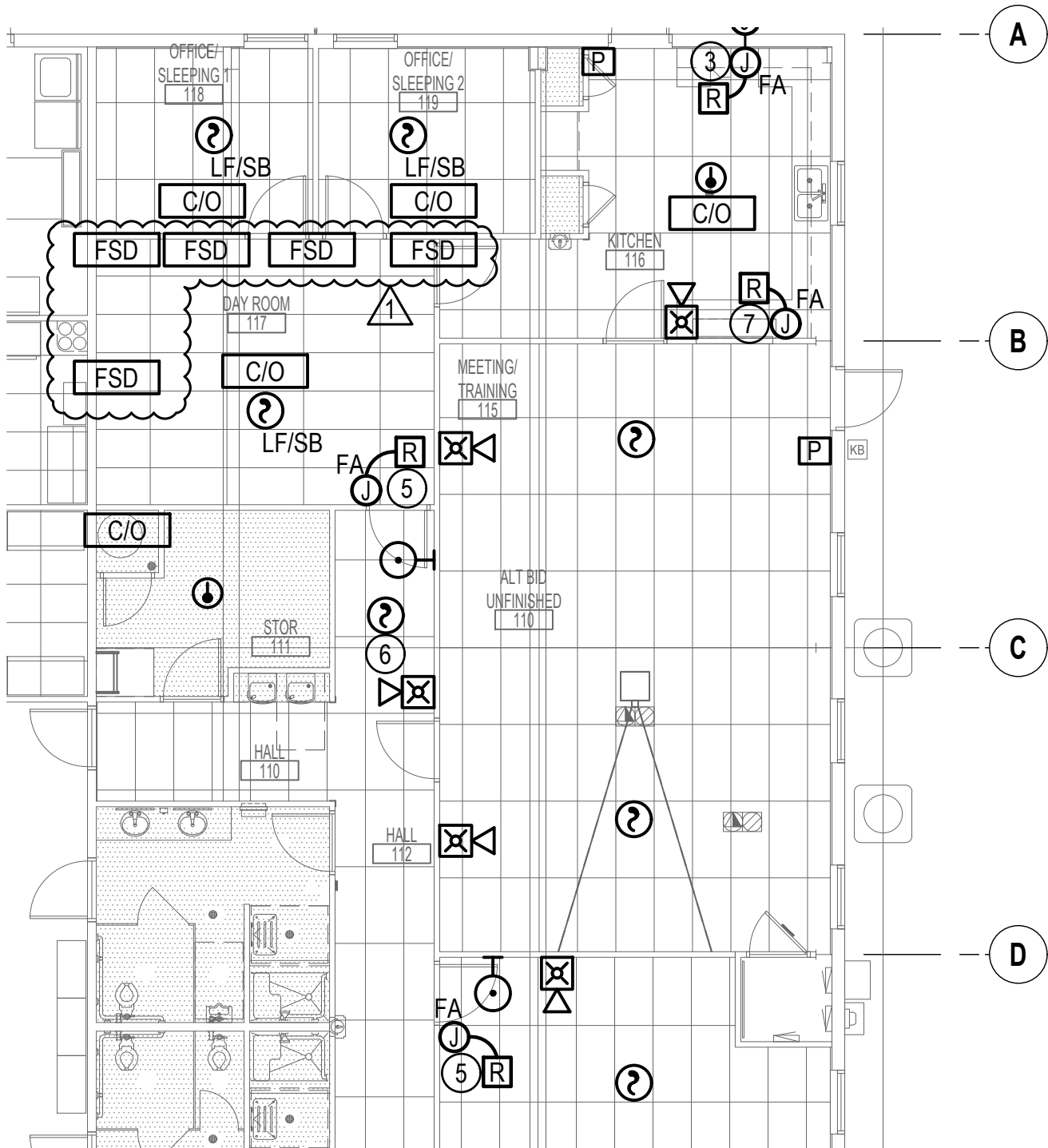
SCALE: 1/8"=1'-0"



bce engineers, inc.
 p: (253) 922-0446
 f: (253) 922-0896
 6021 12th street east, suite 200
 fife, wa 98424

POWER FLOOR PLAN
 ALTERNATE BID

ESK-2.2
 ADDENDUM #1



2 FIRE ALARM FLOOR PLAN - ALTERNATE BID

SCALE: 1/8" = 1'-0"

